

# Horizon

FOR INDUSTRY

100% Egyptian  
manufacturer

Totter's  
TM

# CERTIFICATE OF REGISTRATION

**intertek**  
Total Quality. Assured.

This is to certify that the management system of:

## Horizon for Industry

Main Site: Administration Office : 80 Rabaa Investment Buildings, Nozha St., Ard El-Golf, Cairo, Egypt

Additional Site: Horizon for Industry., Factory: 72 El-Mahager Zone B&C Industrial Zone, Obour City

has been registered by Intertek as conforming to the requirements of:

## ISO 9001:2015

The management system is applicable to:

Manufacturing & Assembling Data Network Racks & Consoles according to market requirements

**Certificate Number:**  
0100589

**Initial Certification Date:**  
12 February 2014

**Last Certificate Expiry Date:**  
11 February 2023

**Date of Last Recertification Audit:**  
06 February 2023

**Certification Cycle Start Date:**  
03 March 2023

**Issuing Date:**  
03 February 2023

**Valid Until:**  
11 February 2026



intertek



014

**Calin Moldovean**  
President, Business Assurance

Intertek Certification Limited, 10A Victory Park, Victory Road, Derby DE24 8ZF, United Kingdom  
Intertek Certification Limited is a UKAS accredited body under schedule of accreditation no. 014.



In the issuance of this certificate, Intertek assumes no liability to any party other than to the Client, and then only in accordance with the agreed upon Certification Agreement. This certificate's validity is subject to the organisation maintaining their system in accordance with Intertek's requirements for systems certification. Validity may be confirmed via email at [certificate.validation@intertek.com](mailto:certificate.validation@intertek.com) or by scanning the code to the right with a smartphone. The certificate remains the property of Intertek, to whom it must be returned upon request.



Approved By

**ECG** **جماعة المهندسين الاستشاريين**  
ENGINEERING CONSULTANTS GROUP S.A.





# Table of Content

---

## 1-10

### Indoor Racks

- 2 Slim Rack
  - 3-4 Wall mount
  - 5-6 Freestanding Width 600mm
  - 7-8 Freestanding Width 800mm
  - 9 Data Centers
  - 10 3-sections rack
- 

## 11-19

### Outdoor Racks

- 11 IP55 Certificate
  - 12 IP65 Certificate
  - 13 Slim racks
  - 14 Outdoor box
  - 15 Outdoor racks
  - 16 AC outdoor rack
  - 17 IP65 racks
  - 18 MSAN
  - 19 Twin Rack
- 

## 20-23

### Add-ons & Accessories

- 21 PDU
- 22 Fans/ Stanace/ Shelves
- 22 Cable Organizers / ODF

## 24-26

### Surveillance Consoles

- 25 General description
  - 26 Console components
- 

## 27-30

### Client portfolio

- 28 Government sector
  - 28 Universities sector
  - 28 Petroleum sector
  - 29 Sports sector
  - 29 Telecom sector
  - 29 Banking sector
  - 30 System Integrators
  - 30 Other sectors
- 

## 31-32

### Project list

- 31 Server Racks & Cabinets
- 32 Surveillance Consoles

# Tatter's

TM

BY *Horizon*  
FOR INDUSTRY

## Indoors Racks

Indoor's Link





## General specifications:

1. **Dimensions:** H154 x W537 x D475 OR customized upon request.
2. **Material:** Galvanized Sheet metal thickness 1.2-1.5mm.
3. **Mounting angles:** Mounted from 1.5mm galvanized steel angles.
4. **Front Door:** Front Glass window, opens with hinges and supplied with opening stopper.
5. **Mounting plate:** Mounting Plate: 3U rotating + 5U Fixed side plates for Patch Panel.
6. **Access Control:** Lock with keys on front.
7. **Painting:** : Electrostatic oven painting for outdoor applications. Ral.7035 or 9005 Black.
8. **Fixation:** Wall Mount Type.
9. **Ventilation:** One fan 9cm.



**Slim Rack  
3U + 5U**

## General specifications:



**Slim Rack**

1. **Material:** Galvanized Sheet metal, thickness 1.5 mm.
2. **Equipment orientation:** Vertical equipment mounting.
3. **Front Door:** Opens with hinges and supplied with opening stopper.
4. **Mounting columns:** Galvanized 19" mounting bars for 3U or 5U.
5. **Access Control:** Lock with keys on front.
6. **Cable Entry:** knock out at the top & bottom.
7. **Painting:** Electrostatic oven painting. Ral.7035 or 9005 Black.
8. **Fixation:** Wall Mount Type.
9. **Ventilation:** Ventilation slots.

## Options:

1. **Ventilation:** Adding fans to the design.
2. **Rear mounting:** mirror thickness 1.5mm galvanized H250 x W300cm.
1. **Slim rack designs:** Customisable upon request.
2. **Non 19" equipment fitting:** Rear galvanized mounting plate for non 19" equipment.

### Standard sizes:

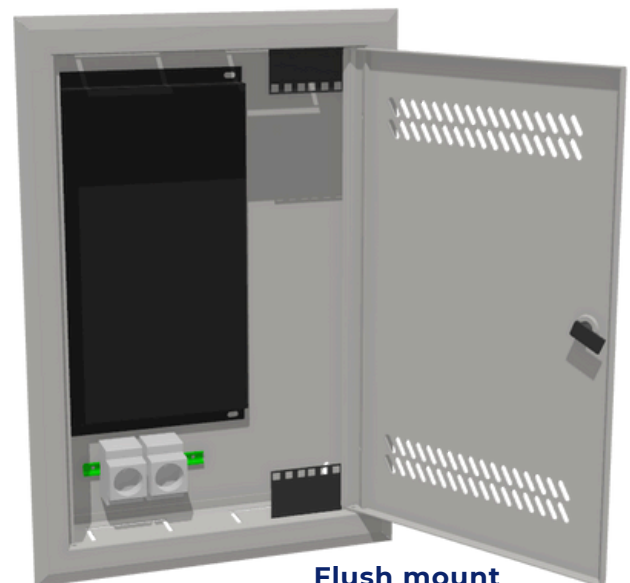
H\*W\*D

- 1 525\*500\*150    2 500\*450\*120

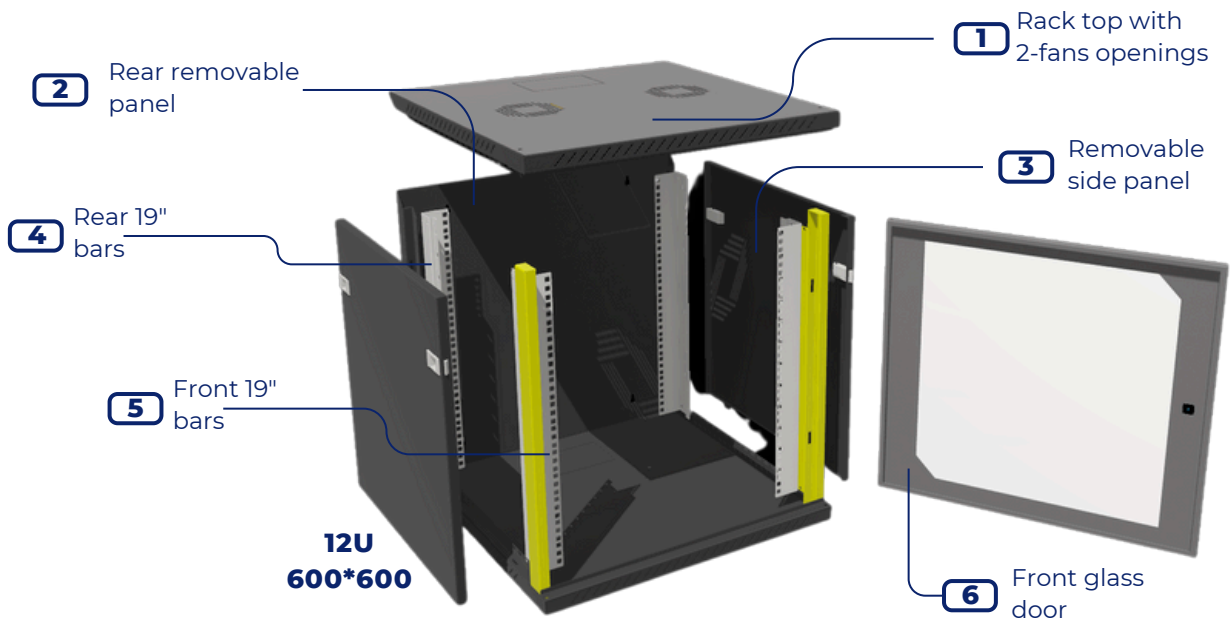
### Flush mount standard sizes:

- 1 600\*400\*120

All dimensions  
are in mm



**Flush mount  
Slim rack**

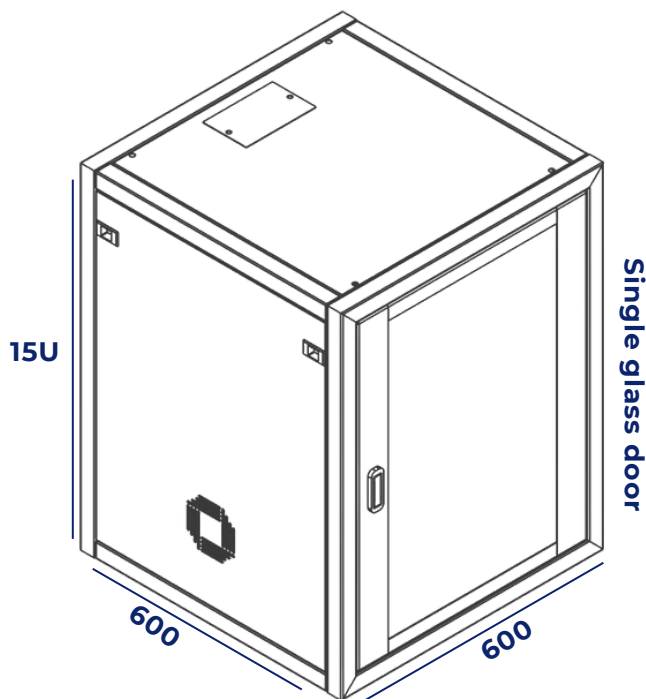


## General specifications:

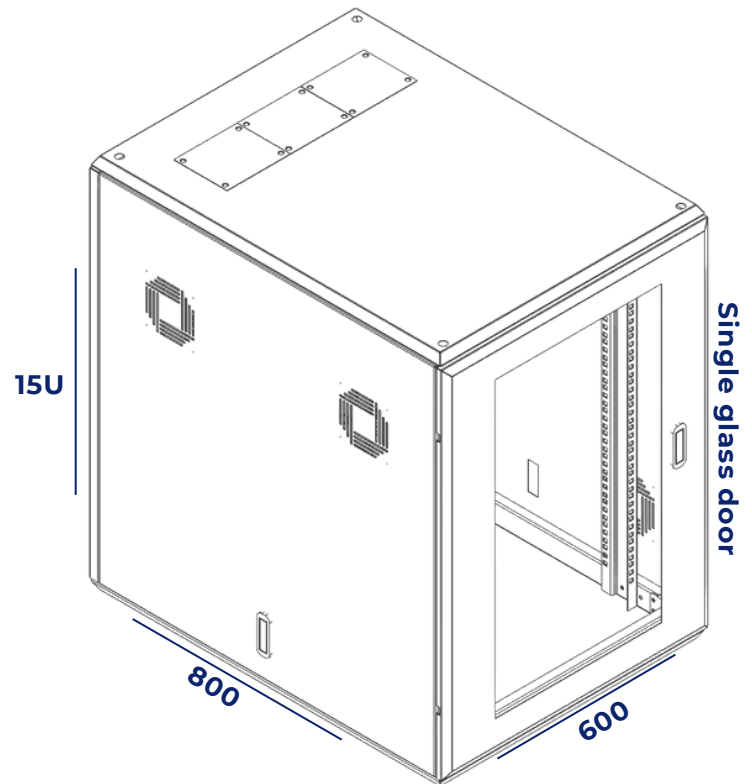
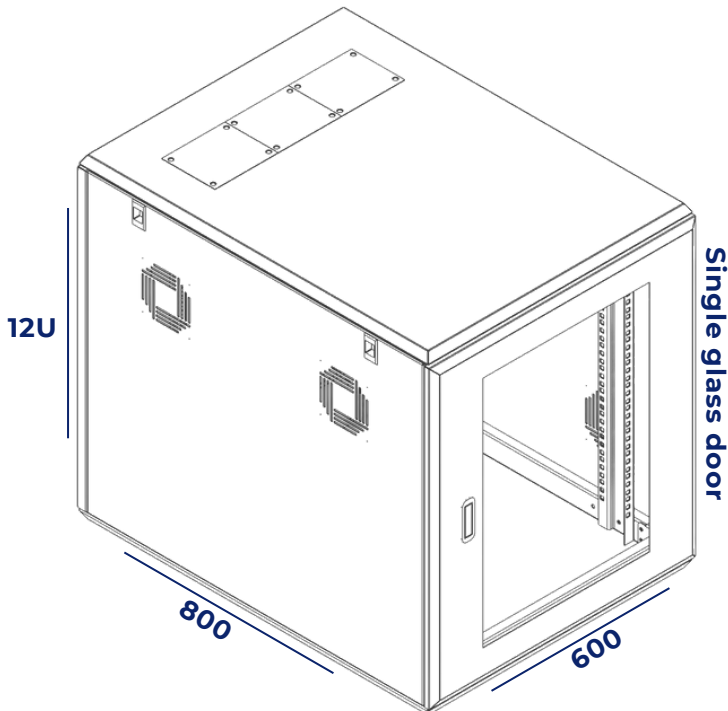
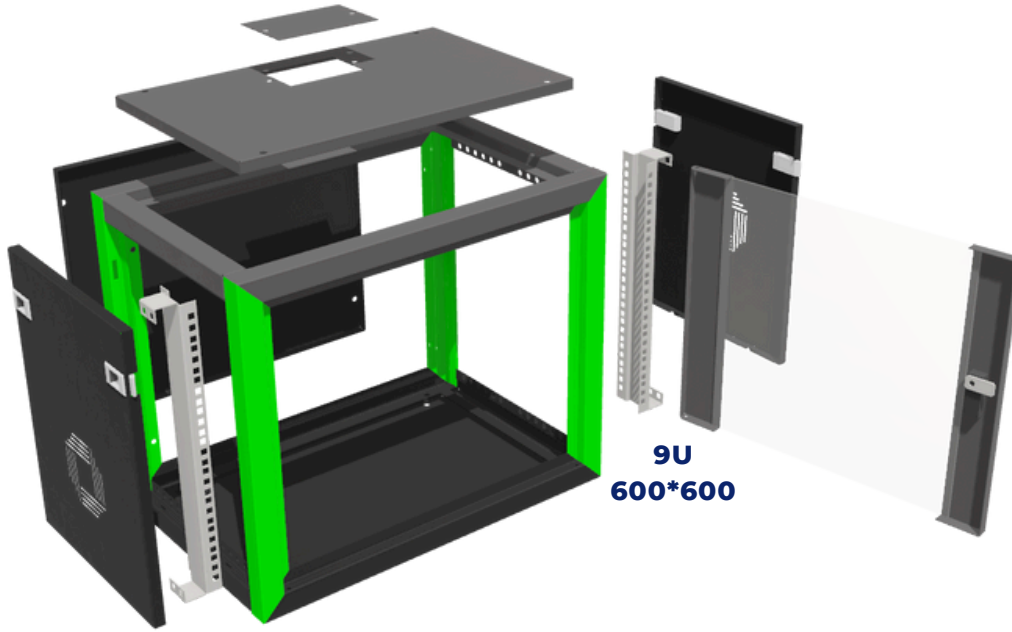
1. **Material:** 1.25mm steel.
2. **Front Door:** Lock and Key.
3. **Access Control:** Lock with keys on front and removable sides for easy access.
4. **Painting:** : Electrostatic oven painting.
5. **Fixation:** Wall Mount Type.
6. **Ventilation:** 1 to 2 fans unit.

## Options:

1. **Front door design:** Glass window or perforated with the option to remove it for easy access while assembling components.
2. **Side panels:** Removable for side access or fixed.
3. **Shelves:** Shelves dimensions could be customised according to the rack depth.
4. **Ventilation:** The rack could use 2 side fans or 4 fans for maximum ventilation with 2 fans positioned on the sides and 2 fans fixed under the top cover.

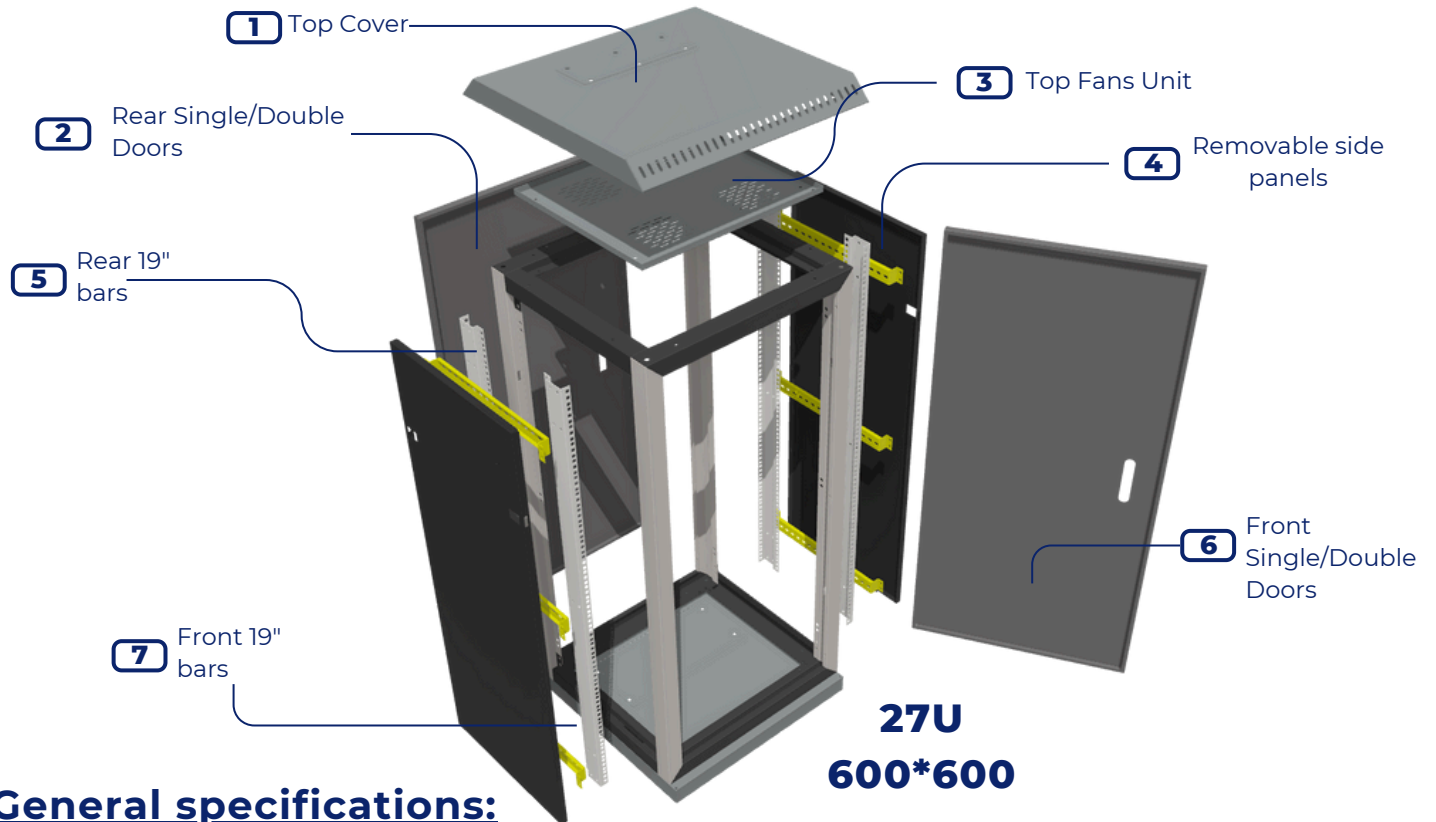






	600x400	600x600	600x800	600x1000	Ref.#
7U	•				PR07/6040
9U		•	•	•	PR09/6060/6080/60100
12U		•	•		PR12/6060/6080
15U		•		•	PR15/6060/60100

All dimensions  
are in mm



## General specifications:

1. **Materials used:** 1.0 - 1.5mm
2. **Ventilation:** From 2 up to 4 fans.
3. **Painting method:** Powder electrostatic paint.
4. **Anti-rust protection:** Galvanizing mounting bars and side braces.

## Specific features:

1. **Side panels:** 1mm steel.
2. **Front door(s):** secured with 3-points lock.
3. **Top cover:** designed with knockout panels for cable entry and top ventilation.
4. **Top fans unit:** designed to accommodate up to 6-fans unit.
5. **19" mounting bars:** galvanized and numbered.
6. **Side braces:** manufactured to maximize the rack's stability, sturdiness and loading capacity.
7. **Back door(s):** Secured with single point lock.

### Standard sizes:

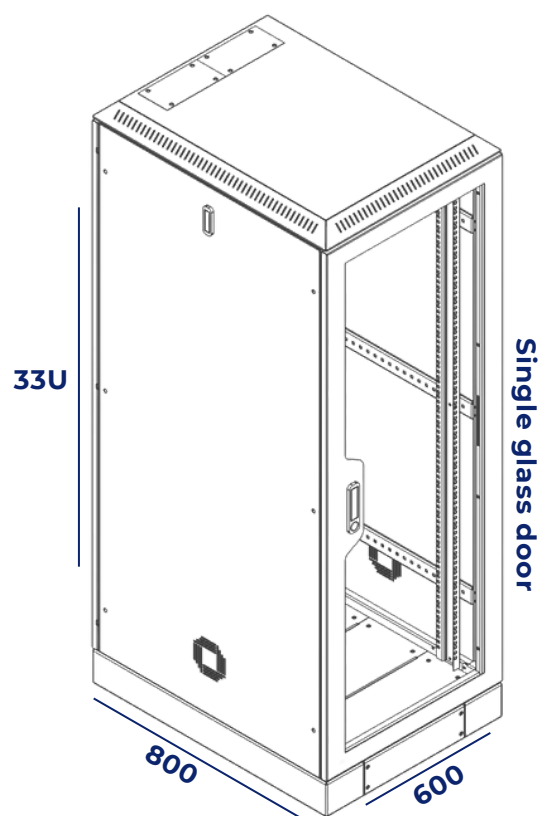
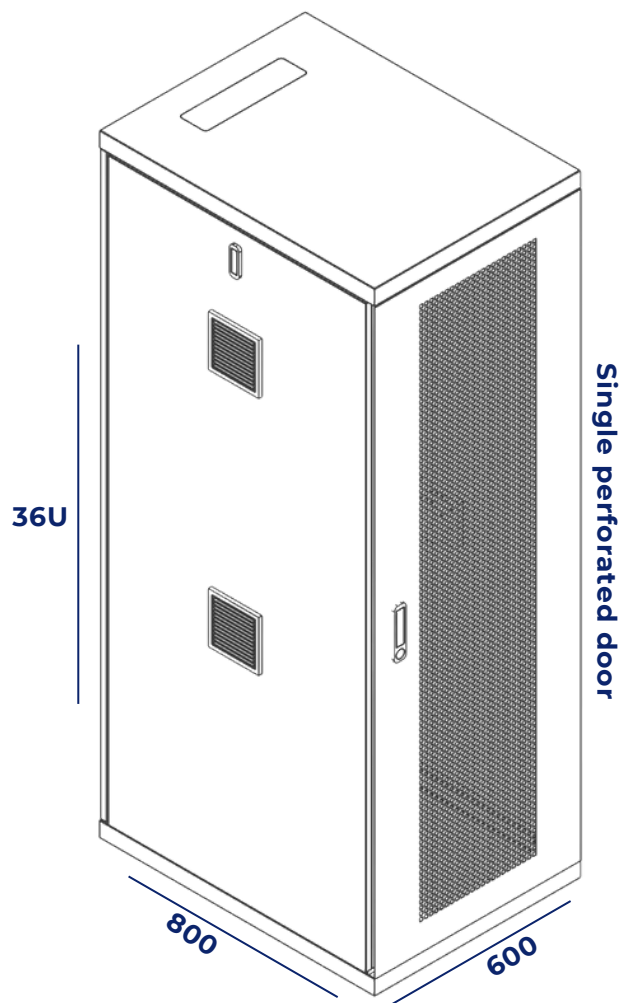
- |          |          |          |         |
|----------|----------|----------|---------|
| <b>1</b> | 600* 600 | <b>2</b> | 600*800 |
| <b>3</b> | 600*1000 |          |         |

All dimensions  
are in mm

## Options:

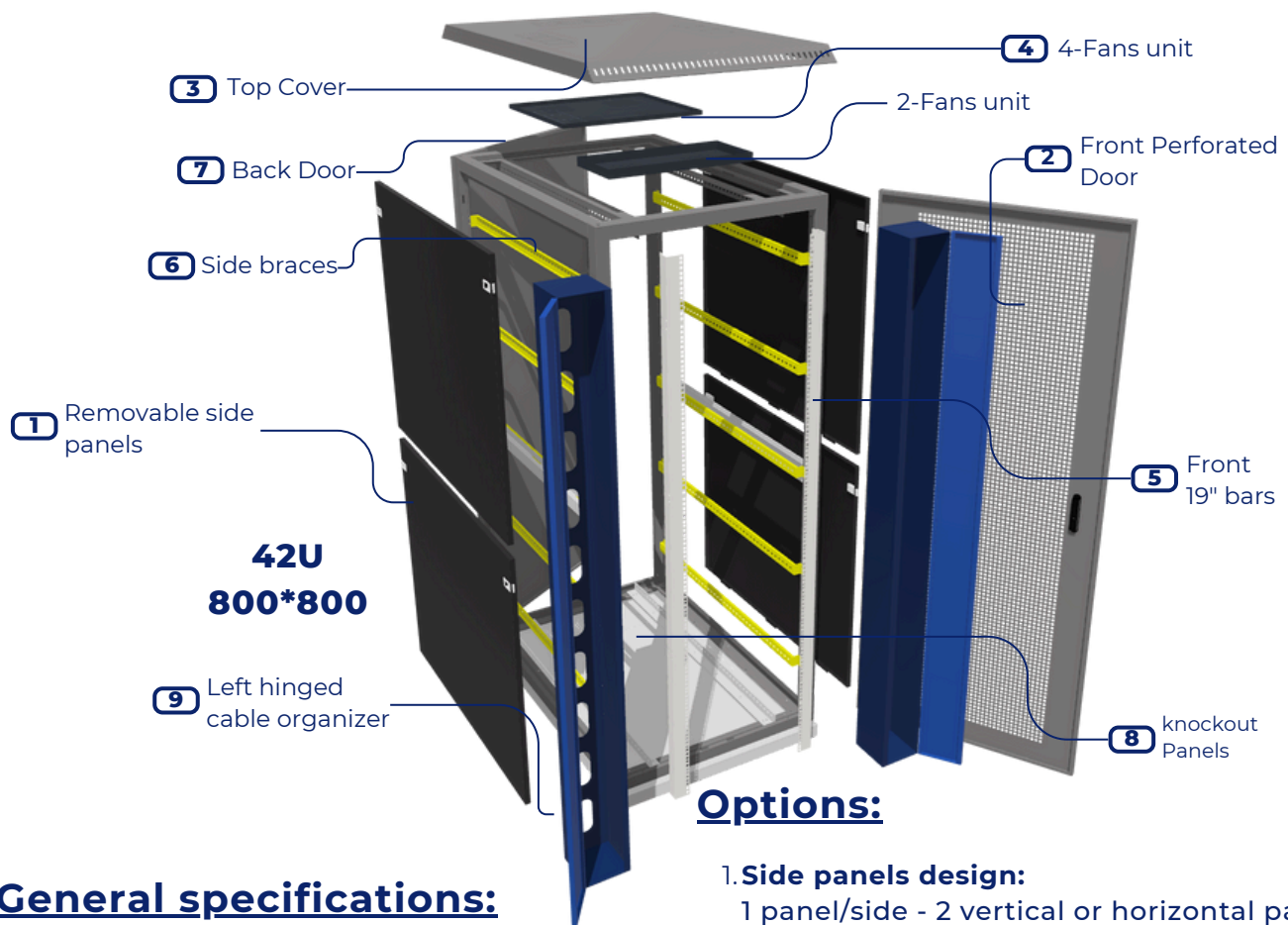
1. **Side panels design:**  
panel/side - 2 vertical or horizontal panels - Fixed - Removable via plastic locks or lock and key.
2. **Front door(s):**
  - 2.1 Either double doors or a single door design.
  - 2.2 Door(s) design could be perforated for 80% ventilation, glass window or fully solid design.
3. **Top cover:**  
Could be designed with knockout panels, brushes covered windows for dust repelling or fully closed.
4. **Top fans unit:**  
The top fan unit has the option to include up to 6 fans and can be matched with bottom similar setup for perfect air circulation.
5. **Rear door(s):**
  - 5.1 The back of the rack could be designed fully fixed, on hinges and 3-points lock or plastic easy to release locks.
  - 5.2 Either double doors or a single door design.
  - 5.3 Door(s) design could be perforated for 80% ventilation, glass window or fully closed design.





	600x600	600x800	600x1000	Ref.#
18U		•		PR18/6080
27U	•	•	•	PR27/6060/6080/60100
32U		•		PR32/6080
37U	•			PR37/6060
42U	•	•	•	PR42/6080/60100
44U	•			PR44/6060

All dimensions are in mm



## Options:

### General specifications:

1. **Materials used:** 1.5mm for chassis.
2. **Ventilation:** From 4 up to 8 fans.
3. **Painting method:** Powder electrostatic paint.
4. **Anti-rust protection:** Galvanized mounting bars and side braces.

### Specific features:

1. **Side panels:** 1 mm steel. One or two pieces side panel.
2. **Front door(s):** secured with 3-points lock.
3. **Top cover:** designed with knockout panels for cable entry and top ventilation.
4. **Top fans unit:** accommodates up to 6-fan unit.
5. **19" mounting bars:** galvanized and numbered.
6. **Side braces:** manufactured to maximize the rack's stability, sturdiness and loading capacity.
7. **Back door(s):** Single or double doors.
8. **Knock out paneles**
9. **Left hinged cable organizer**

### 1. Side panels design:

1 panel/side - 2 vertical or horizontal panels - Fixed - Removable via plastic locks or lock and key

### 2. Front door(s):

- 2.1 Double doors or a single door design.
- 2.2 Single or double door(s) design could be perforated for 80% ventilation, glass window or fully closed design.

### 3. Top cover:

Could be designed with knockout panels, brushes covered windows for dust repelling or fully closed.

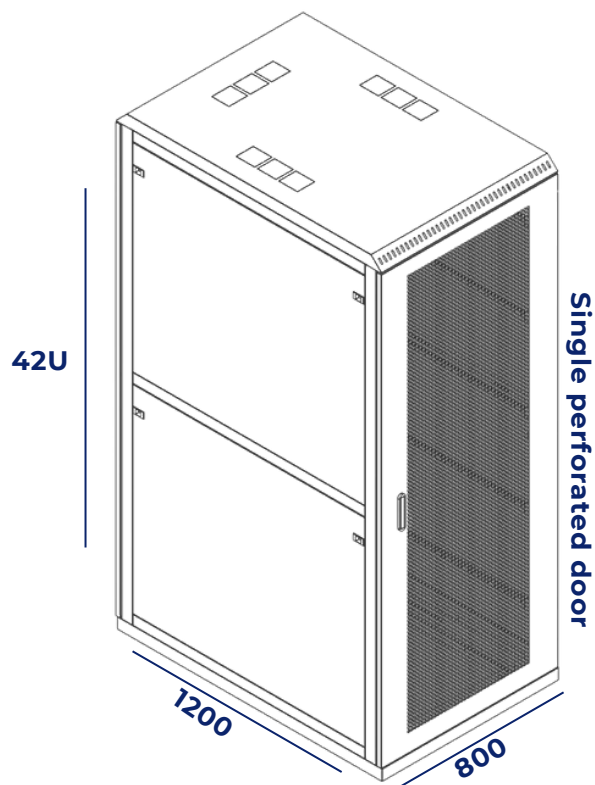
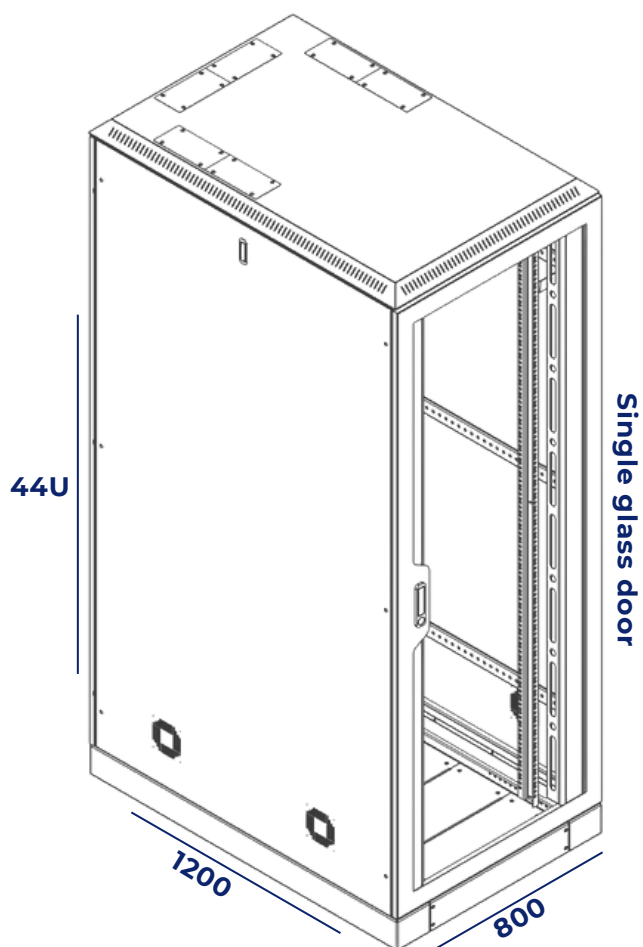
### 4. Top fans unit:

The top fan unit has the option to include up to 6 fans and can be matched with bottom similar setup for perfect air circulation.

### 5. Rear door(s):

- 5.1 The back of the rack could be designed to be fully fixed, on hinges and 3-points lock or using plastic easy to release locks.
- 5.2 Either double doors or a single door design.
- 5.3 Door(s) design could be perforated for 80% ventilation, glass window or fully closed design.

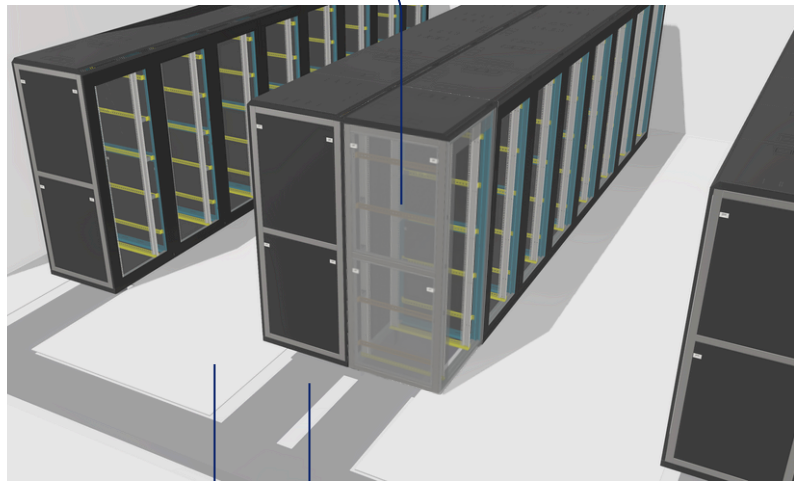
6. **Cable organizer:** Two vertical cable organizers with hinges at the front of the rack.



	800*600	800x800	800x1000	800x1100	800x1200	Ref#
27U		•				PR27/8080
32U		•	•			PR32/8080/80100
37U			•			PR37/80100
42U	•	•	•		•	PR42/8060/8080/80100/80120
47U				•	•	PR4780110/801200

All dimensions are in mm

1 42U Rack



2 Raised floor

3 Cable Duct

Our in-house manufacturing capabilities allow us to deliver comprehensive data center solutions tailored to your specific requirements. From small-scale data centers to large-scale enterprise deployments, we offer a wide range of products and services, including: the customized racks for each product along with the requested accessories and the raised floor.

### 1 42U rack:

Industry-standard 42U network rack provides reliable support for servers, networking equipment, and patch panels.

With enhanced airflow management and customizable configuration options, this rack is engineered to accommodate diverse infrastructure needs.

List of options can be customized to each project's specific needs such as: lockable doors, cable management systems, and power distribution units.

Optimized airflow and cable management for efficient operation.

The chosen rack size and dimensions vary from a project to another.

All racks are customizable.  
Options are listed in pages 5 & 7.

#### Specification:

1. **Materials used:** 1.5mm for chassis.
2. **Painting method:** Powder electrostatic paint.
3. **Anti-rust protection:** Galvanized mounting bars and side braces.
4. **Accessories and add-ons:**
  - 4.1. Power Distribution Units: Designed to manage power effectively within your data center, available in various configurations to suit your rack and equipment layout.
  - 4.2. Cable organizers and Ladders: Simplify cable organization with versatile, easy-to-install trays and ladder options.

### 2 Raised Floor System:

The raised floor system provides optimal airflow and efficient cooling pathways for heat-intensive data environment along with the removable rack base to insure maximum accessibility for both cooling and cabling.

#### Specification:

1. **Panel Size:** 600mm x 600mm.
2. **Material:** Anti-static, heavy-duty panels.
3. **Customization:** Adjustable height, durable finish & customizable tile colors.

### 3 Under Surface Cable Ducts:

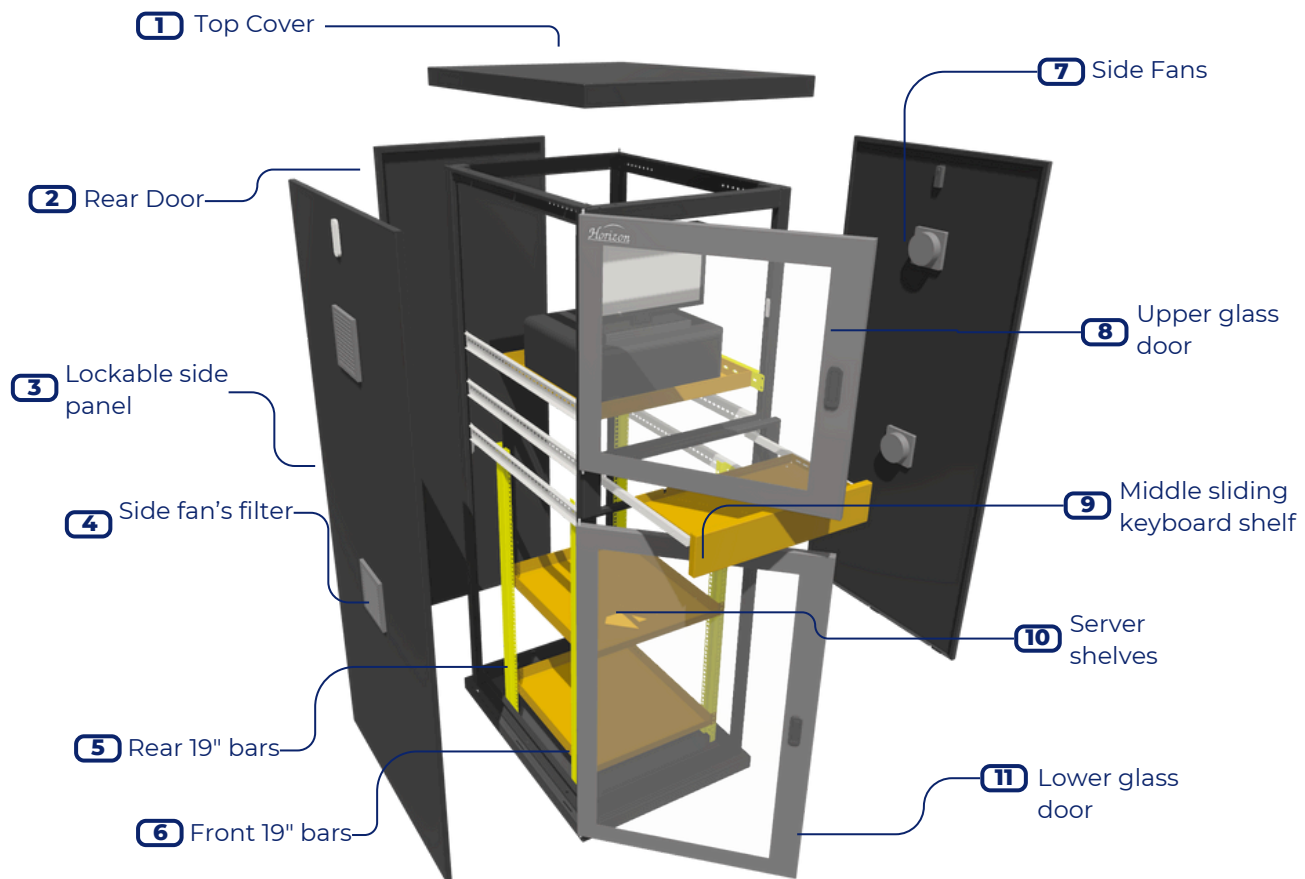
The under surface cable duct system ensures streamlined cable management, preventing clutter and maintaining the integrity of power and data connections.

Constructed to support large volumes of cables, this solution facilitates organized routing, reduces signal interference, and enhances data center reliability.

#### Specifications:

1. **Duct Size:** Customizable widths and depths.
2. **Material:** 1-1.5mm steel.
3. **Protection:** Galvanized.





### General specifications:

1. **19" Indoor rack (36U) Three sections 600 x 600mm.**
2. **Material:** Sheet Metal 1.5mm.
3. **Side panels:** Removable sides equipped with two fans each.
4. **Painting method:** Powder electrostatic paint Color 9005 or 7035.

### Upper section:

1. **Dimensions:** 13U height.
2. **Shelf:** The screen is mounted on a fixed shelf.
3. **Front door:** The computer is secured glass door with lock & key.
4. **Mounting:** The upper section has only the computer shelf without 19" columns.
5. **Ventilation:** Two fans mounted under the roof with two more fans mounted on each rack side.

### Middle section:

1. **Dimensions:** 4U height.
2. **Shelf:** The middle shelf is sliding with a handle for the keyboard and mouse.

### Lower section:

1. **Dimensions:** 19U height.
2. **19" Mounting bars:** 4 x 19" mounting bars, 2 at the front and two at back of the rack.
3. **Shelf:** 2 Fixed shelves with a depth of 50cm and load up to 100 Kgs.
4. **Front door:** Security glass door with lock & key.
5. **Ventilation:** Two Side Fans with filter in each side.

### Options:

1. **Top view dimensions:** Both the depth and width are customizable upon request.
2. **The sections division:** Each section could be divided according to the screen and other used equipment's dimensions.

# Tatter's


TM

BY *Horizon*  
FOR INDUSTRY

## Outdoor Racks

### Outdoor IP55 Certificate

Ministry of Higher Education & Scientific Research  
National Institute of Standards



وزارة التعليم العالي والبحث العلمي  
المعهد القومي للمعايرة

El-Sadat (Tersa) St., El Haram, Giza, Egypt - P.O.Box 136 Giza - Code 12211 - Tel/ Fax: +202 - 33867462 - NIS Tel +202 - 37401113


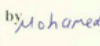
**TEST REPORT**  
تقرير اختبار

Report No.	739/46T031/2/217/2024	Code	OPR09-p063/F
------------	-----------------------	------	--------------

**• Test Results**

IP 55			
IP Level	First digit: Ingress of Solids Objects	Effective Against	Results
5	Ingress of dust is not entirely prevented, but it must not enter in sufficient quantity to interfere with the satisfactory operation of the equipment; complete protection against contact	Dust Protected	complete protection against contact
Second Digit: Liquids			Results
5	Water projected by a nozzle (6.3mm) against the enclosure from any direction shall have no harmful effects	Water jets	No harmful effect.

**• Uncertainty Statement**  
The combined standard uncertainty is calculated based on ISO 9000:year which include at least the standard uncertainty reported for the reference standard, the standard uncertainty for the measurement process, the standard uncertainty for any uncorrected errors. The combined standard uncertainty is multiplied by a coverage factor (k) of 2 to provide an expanded uncertainty, which defines a level of confidence of approximately 95 percent (95.45 %). The expanded uncertainty presented in this certificate/report is consistent with the ISO/IEC GUIDE 98-3:2008 "Uncertainty of measurement — Part 3: Guide to the expression of uncertainty in measurement (GUM:1995)".

Tested by  Reviewed by  Mohamed

Page 3 of 3

NIS This certificate is issued in accordance with the laboratory accreditation requirements. It provides traceability of measurement to recognized National standards, and to the units of measurement realized at the NIS or other recognized national standards laboratories. This certificate May not be reproduced other than in full by photographic process. This certificate refers only to the particular item submitted for testing.



# Outdoor IP65 Certificate

Ministry of Higher Education  
& Scientific Research  
National Institute of Standards



وزارة التعليم العالي والبحث العلمي  
المعهد القومي للمعايرة

El- Sadat (Tersa) St., El Haram, Giza, Egypt - P.O.Box 136 Giza - Code 12211 - Tel/ Fax: +202 - 33867462 - NIS Tel +202 - 37401113

## TEST REPORT

تقرير اختبار

• Report No.	739/46T031/1/216/2024	Code	OPR09-6161
--------------	-----------------------	------	------------



### • Test Results

IP 65			
IP Level	First digit: Ingress of Solids Objects	Effective Against	Results
6	Dust Tight	No ingress of dust; complete protection against contact	No Effect
Second Digit: Liquids		Effective Against	Results
5	Water jets	Water projected by a nozzle (6.3mm) against the enclosure from any direction shall have no harmful effects.	No harmful effect.

### • Uncertainty Statement

The combined standard uncertainty is calculated based on ISO 0000/year which include at least the standard uncertainty reported for the reference standard, the standard uncertainty for the measurement process, the standard uncertainty for any uncorrected errors. The combined standard uncertainty is multiplied by a coverage factor (k) of 2 to provide an expanded uncertainty, which defines a level of confidence of approximately 95 percent (95.45 %). The expanded uncertainty presented in this certificate/report is consistent with the ISO/IEC GUIDE 98-3:2008 "Uncertainty of measurement — Part 3: Guide to the expression of uncertainty in measurement (GUM:1995)".

Tested by



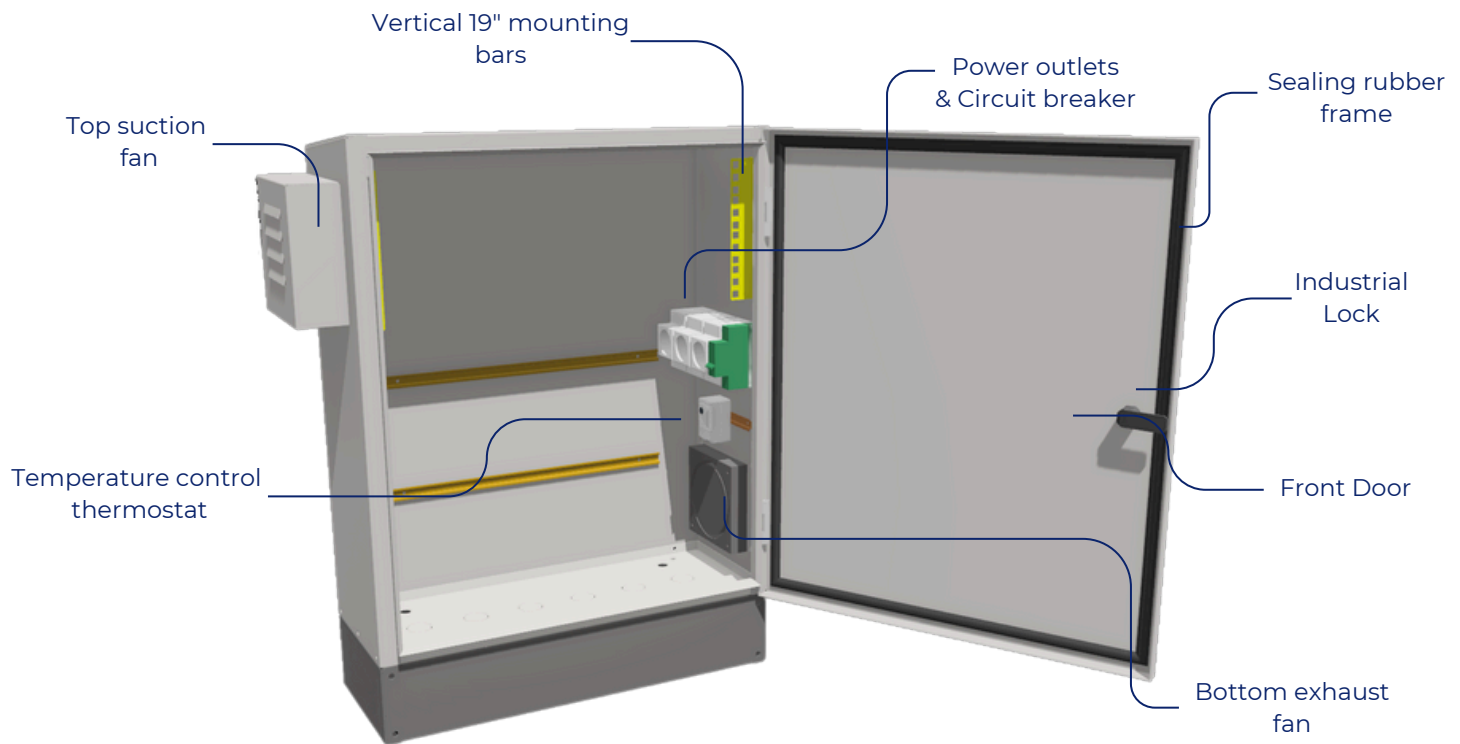
Reviewed by

Nermeen Mohamed

This certificate is issued in accordance with the laboratory accreditation requirements. It provides traceability of measurement to recognized National standards, and to the units of measurement realized at the NIS or other recognized national standards laboratories. This certificate May not be reproduced other than in full by photographic process. This certificate refers only to the particular item submitted for testing.

Outdoor's Link





## General Specifications:

1. **Dimensions:** H620 x W530 x D200mm (Customizable).
2. **Materials used:** 1.2mm galvanized steel.
3. **Outdoor protection measures:**
  - 3.1. Dust filters for each fan.
  - 3.2. Rubber gasket frame on the door.
  - 3.3. Rubber gaskets on cable entries.
4. **Cable entry:** through special cable glands with inner rubber gaskets to protect against dust or insect entry.
5. **Ventilation:** 1 suction fan with opposite exhaust fan to create positive air circulation.
6. **Mounting:** Pole-mount or wall-mount.
7. **Painting method:** Electrostatic oven painting for outdoor applications. Ral.7035.
8. **Anti-rust protection:** Galvanizing the mounting bars and side braces.

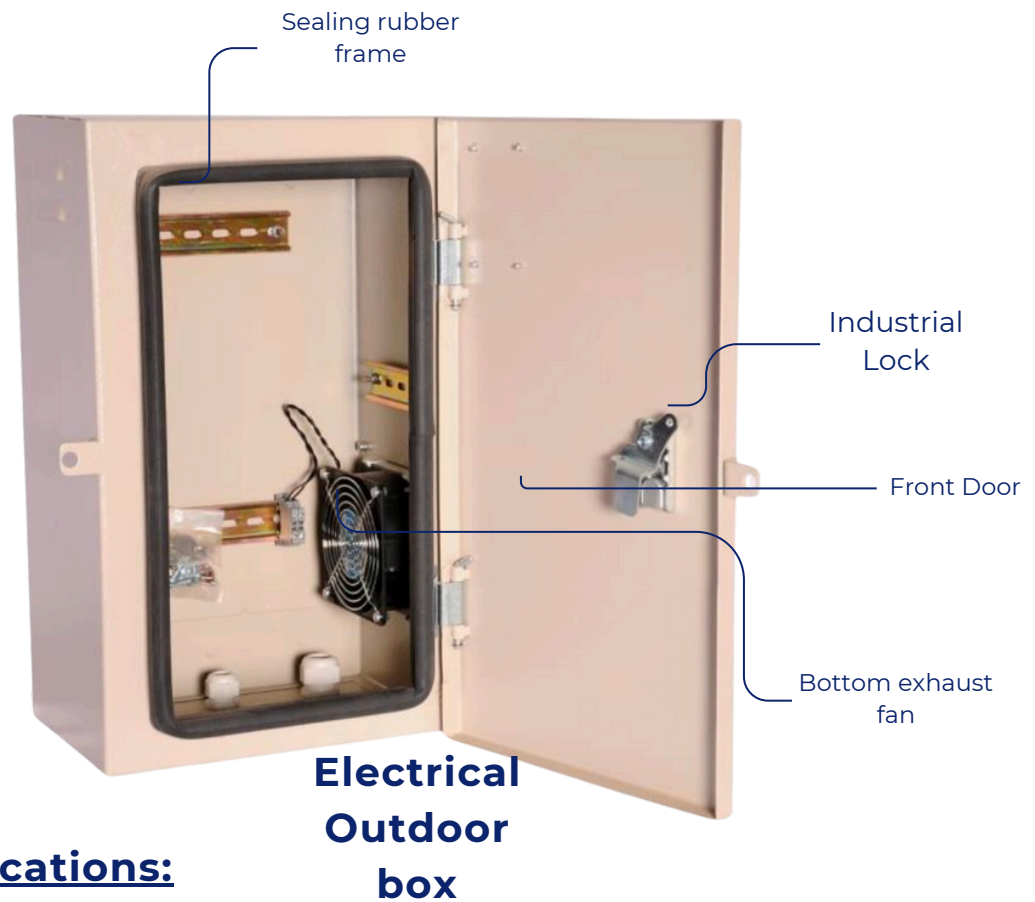


**Wall-mount  
Slim rack**

## Option:

**Temperature control:** An electronically pre-set thermostat could be added to control the fans on/off for maximum efficiency and durability.





### General specifications:

1. **Dimensions:** IP 55 – H500 x W300 x D200mm (customizable)
2. **Materials used:** 1.2mm galvanized steel.
3. **Outdoor protection measures:**
  - 3.1. Dust filters for each fan.
  - 3.2. Rubber gasket frame on the door.
  - 3.3. Rubber gaskets on cable entries.
4. **Access Control:** Lock with keys on front.
5. **Cable entry:** through special cable glands with inner rubber gasket to protect against dust or insect entry.
6. **Ventilation:** 1 suction fan with filter and cover.
7. **Mounting:** Pole-mount or wall-mount.
8. **Painting method:** Electrostatic oven painting for outdoor applications. Ral.7035.
9. **Anti-rust protection:** Galvanizing mounting bars and side braces.



### Option:

1. **Fans are controlled:** by a pre-set thermostat to control the temperature degree at which fans operate & when they stop. This is essential to control enclosure temperature and to give rest for fans.
2. **Bracket:** For fixing to Pole.



**General specifications:**

1. **Materials used:** 1.2mm galvanized steel.
2. **Outdoor protection measures:**
  - 3.1. Dust filters for each fan.
  - 3.2. Rubber gasket frame on the door.
  - 3.3. Rubber gaskets on cable entries.
3. **Rain protection:** The roof is designed tilted to protect against rain accumulation.
4. **Cable entry:** through special cable glands with inner rubber gaskets to protect against dust or insect entry.
5. **Ventilation:** 1 or 2 suction fans with opposite exhaust 1 or 2 fans to create positive air circulation.
6. **Mounting:** Pole-mount, wall-mount or free-standing.
7. **Painting method:** Electrostatic oven painting for outdoor applications. Ral.7035.
8. **Anti-rust protection:** Galvanizing mounting bars and side braces.
9. **IP protection:** All designs and product are available in IP55 and IP65.

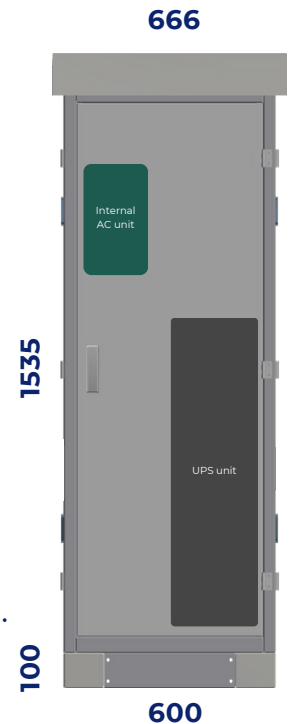
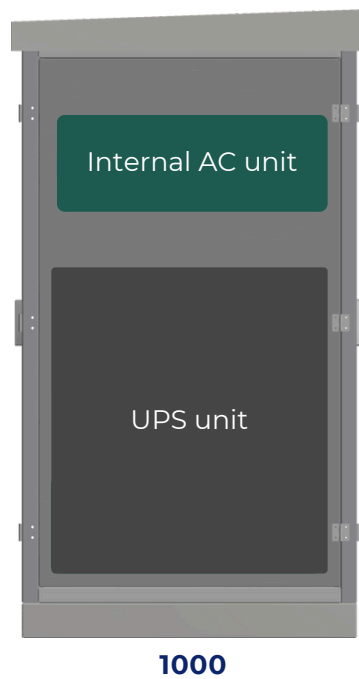


	600x400	600x600	Ref.#
6U	•		OPR06/6040
7U		•	OPR07/6060
9U	•	•	OPR09/6040/ 6060
12U		•	OPR12/6060
15U		•	OPR15/6060
24U		•	OPR24/6060

All dimensions are in mm

## UPS Outdoor Rack

## Side view

**Technical Specifications:**

1. **IP65 protection**
2. **Outer dimensions:** Length 1535mm, Depth 1000mm, Width 600mm.
3. **Rain protection:** Slightly tilted second top cover (for rain and dust directing).
4. **Access Control:** 3-Point lock with keys for the front door.
5. **In-rack air condition:** Fixed AC unit inside the rack with cable glands protecting the ducts reaching the compressor unit outside the rack.
6. **AC Compressor:** Compressor could be positioned under the rack (with modified rack plinth upon request).
7. **Double wall insulation:** Rockwool thermal insulation between the two wall panels to prevent the outdoor heat in and the AC air out, achieving the optimum operating setup for the UPS. The double wall insulation plus the control of outer air leaking inside lead to maximize the air condition effectiveness and durability.
8. **Rubber sealing gaskets:** on door frame.
9. **Cable entry protection:** outdoor protection achieved through special cable glands with inner rubber gasket to protect against dust or insect entry.
11. **Cable entry location and dimensions:** depend on the project's requirements.
12. **Outer wall:** manufactured with 1.25mm galvanized steel sheet, the inner wall is 1mm steel and the chassis is 2mm thick.
13. **Rack is mount:** on a 100mm height plinth or 4 legs stand.



## General specifications:

1. **IP protection:** IP65
2. **Materials used:** 1.2mm galvanized steel.
3. **Outdoor protection measures:**
  - 3.1. Dust filters for each fan.
  - 3.2. Rubber gasket frame on the door.
  - 3.3. Rubber gaskets on cable entries.
4. **Access Control:** 3-Point lock with keys on the front.
5. **Rain protection:** The roof is tilted to protect against rain accumulation.
6. **Temperature control:** Fans are electronically controlled by a pre-set thermostat.
7. **Cable entry:** through special cable glands with inner rubber gaskets to protect against dust or insect entry.
8. **Ventilation:** 1 or 2 suction fans with opposite exhaust  
1 or 2 fans to create positive air circulation.
9. **Mounting:** Pole-mount, wall-mount or free-standing.
10. **Painting method:** Electrostatic oven painting for outdoor applications. Ral.7035.
11. **Anti-rust protection:** Galvanized mounting bars and side braces.







### General specifications:

1. **Material:** 1.2mm galvanized steel.
2. **Outdoor protection:**
  - 2.1. standard IP56.
  - 2.2. Rubber steel-reinforced gaskets to tighten all doors' openings.
  - 2.3. Insulation material PEF in between the double layers for heat insulation.
  - 2.4. Isolated batteries compartments.
  - 2.5. Insulation material: Polyethylene foam.
3. **Mounting bars:** 19" & 21" Mounting columns made from 1.5mm stainless steel sheets.
4. **Earth bars:** 25cm made from red electrical copper (99.9% purity), fixed in the bottom layer of the compartments.
5. **Back panel ventilation:** slots for releasing harmful gas generated by batteries.
6. **Ventilation:** AC or heat exchanger.
7. **Stance:** Free standing on a concrete base (with four brackets to be fixed on the concrete).
8. **Anti-rust protection:** Galvanized mounting bars and side braces.
9. **Painting method:** Electrostatic oven painting for outdoor applications. Ral.7035.
10. **Cable entry:** Separate cable entrance openings for power, data and optical cables.

### Doors & Partitions Specifications:

1. Enclosure includes two front doors for the two separated compartments with 110° opening angle controlled by door limiting devices.
2. One side door for the side MDF compartment.
3. One side window at the other side for consumption meter inspection.
4. The lock is theft proof three-point lock with door sensors.
5. Every component's section is completely isolated (equipment, battery & power supply) for safety and better heat isolation and temperature control.
6. Special windows in the intermediate walls for cables traffic.

## Technical Specifications:

1. **Material:** Doors & sides thickness is 2mm, Inner lining for doors & Sides are 1mm. All galvanized steel sheets.
2. **19" mounting bars:** 19" Outdoor 28U Twin Rack
3. **Stance:** Free-Standing standard on chassis.
4. **Outdoor protection:**
  - 4.1. Standard IP56.
  - 4.2. Double wall for better temperature isolation (option).
5. **Roof tilted:** to protect against rain accumulation above the roof.
6. **Front & Back Doors:** Twin double doors with 3 point fixation.
7. **Stance:** Free standing on concrete base.
8. **Ventilation:** AC or heat exchanger.
9. **Anti-rust protection:** Galvanizing mounting bars and side braces.
10. **Painting method:** Electrostatic oven painting for outdoor applications. Ral.7035.
11. **Double layer wall:** Can be equipped with inner rock wool or high-density 37 polyethylene foam lining upon request for extra temperature insulation.
12. **Movable 19" Mounting Columns:** Can be shifted forward & backward at 20mm steps to best-fit depths of all types of equipment.
13. **Cable entry:** Cable handling compartment with 20cm Height beneath the whole rack area. It has front & rear doors 13cm height under the rack base.
14. **Cable Organizers:** At sides of the 19" columns.
15. **Optic Fiber Organizers:** At front side of the 19" columns.
16. **Access Control:** Lock with keys on front & back.
17. **Galvanization:** 19" mounting columns for scratch protection. Prior galvanization is must to resist the weather conditions.

28U



All dimensions  
are in mm



# Tatter's

TM

BY *Horizon*  
FOR INDUSTRY

## Accessories

[Accessories Link](#)



## 19" 6 Sockets power distribution unit:

1. **Dimension:** 19" x 2U.
2. **Components:** 6 sockets with 10-amp. impedance and a max of 16 amp.
3. **Socket protection:** Sockets with accidental opening protection. Both socket openings should be opened together.
4. **Circuit breakers:** Supplied with 2 circuit breakers, Max 10 Amp each. Each circuit breaker protects three sockets to provide a backup solution in case of a short circuit.  
**Painting:** Electrostatic oven painting for indoor applications. Ral 9005 (Black Color).
5. **Earth (GND):** Standard earth terminal.



## 19" 8 Or 10 socket power distribution unit:

1. **Dimension:** 19" x 2U
2. **Components:** 8 or 10 sockets with 10-amp. impedance and a max of 16 amp.
3. **Socket protection:** Sockets with accidental opening protection. Both socket openings should be opened together.
4. **Circuit breakers:** Supplied with 2 circuit breakers. 10 Amp. Max. per each CB. One for each 4 or 5 sockets with a separate power circuit to provide a backup solution when a short circuit happens at one group of sockets.
5. **Painting:** Electrostatic oven painting for indoor applications. Ral 9005 (Black Color).
6. **Earth (GND):** Standard earth terminal.



Front view



Back view

## 20-socket power distribution unit +circuit breaker:

1. **Stance:** Stand alone or vertically mounted on a rack's 19" bars.
2. **Paint:** Electrostatic paint for indoor application
3. **Sockets:**
  - 3.1. Bticino / Lucci, Modo
  - 3.2. High voltage sockets, switches and wire.
  - 3.3. Sockets with 10 amp. impedance and a max. of 16 amp.
  - 3.4. Sockets with accidental opening protection.



## C13 20-socket power distribution unit +circuit breaker:

Vertical Power Distribution Panel  
20 Sockets C13 : PDP 20-2CB

1. **Dimension:** L1100mm x W560mm
2. **Components:** 20 sockets **C13** with 10 amp. impedance and a max of 16 amp Sockets
3. **Circuit breakers:** 2 circuit breakers, 32 Amp. Max. per each CB (customizable upon request) Each circuit breaker controls 10 sockets to provide a backup solution when a short circuit happens at one group of sockets.
4. **Sockets:** Industrial grade sockets **IEC 60309 2P 32Amp** -
5. **Painting:** Electrostatic oven painting for indoor applications. Ral 9005 (Black Color).
6. **Earth (GND):** Standard earth terminal.





Fan units



**Fan unit**

Four-fans including on/off front indicator switch

1. Height 1U.
2. On/Off switch.
3. Thermal sensors.
4. Sensor to monitor the temperature of the rack and activates 1, 2, 3 or 4 fans according to the temperature recorded, an alarm (buzzer). When the temperature is safe again, it shuts off the fans.
5. Outdoor option, fitted with outdoor filters and wind blocker.

**Available sizes:**

1. 2 fans-unit
2. 4 fans-unit
3. 6 fans-unit

**Stance options**



Adjustable feet



Wheels with brakes

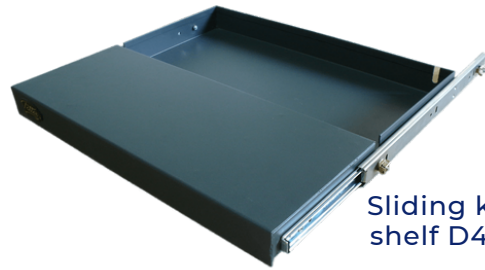


Plinth



Pole or wall mount

Keyboard shelves

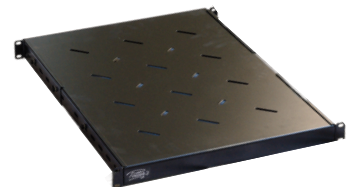
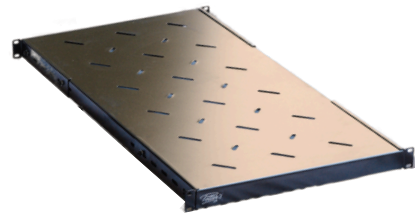


Sliding keyboard shelf D400 x 1U

**Technical Specifications:**

1. Keyboard Shelf for 19" racks
2. Dimensions:
  - 2.1. (PKB 19-6) for 600 x 600mm Racks.
  - 2.2. (PKB 19-8) for 600/800 x 800mm Racks.
  - 2.3. (PKB 19-10) for 800 x 1000mm Racks.
3. Load capacity is up to 30 Kg.

Server shelves



**Technical Specifications:**

1. 19" Fixed server shelf with mounting kit. Best fit for loads up to 100 Kgs.
2. **Dimensions:**
  - 2.1. 500mm depth x 1U height for Racks D600mm (PFS-50).
  - 2.2. 650mm depth x 1U height for Racks D800mm (PFS-65).
  - 2.3. 850mm depth x 1U height for Racks D1000mm (PFS-85).

Closed



Opened



## Vertical cable organiser:

1. Vertical built-in cable organizer along the whole rack.
2. With clip-on door mechanism for elegant and organized setup.
3. The cable organizer's door is designed to be removable for easy access while wiring.

## Vertical Cable Organizer (PVOC):

Side Vertical Cable Organizer to control Cable traffic. Fixed in racks between front and rear chassis



## 19" Organizer with Cover (PHOC):

1. **Dimensions:** 1U horizontal front or rear fixation cable organizer
2. **Cover Dimensions:** 19"
3. x 90mm depth x 1U height.



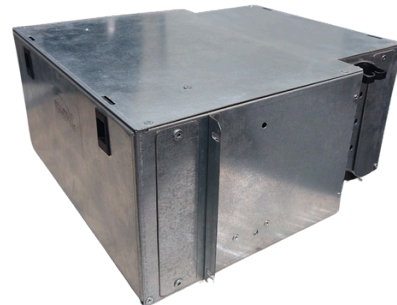
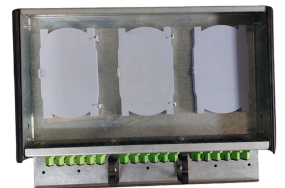
## 19" Organizer with Brackets (PHOB):



## Optical Distribution Frame (ODF)

### Technical specifications:

1. High density and high-capacity frame dedicated to provide cable interconnections.
2. Covers fiber splicing, termination and connectors all together in one frame.
3. 4U/ 5U height. (Customisable)
4. ODF 144 connectors includes vertical multiple shelves to carry the splicing unit and connectors.
5. Cable organizer rings are vertically and horizontally fixed in front and rear areas of ODF for accessibility.
6. ODF front cover keeps the network components safe from misuse.
7. ODF is manufactured from steel sheets 1-1.5mm thick, and electrostatic painted.
8. ODF front cover keeps the network components safe from misuse.
9. ODF is manufactured from steel sheets 1-1.5mm thick, and electrostatic painted.





# Tatter's

TM

BY *Horizon*  
FOR INDUSTRY

## Surveillance Consoles





## General description:

Consoles are used in a wide range of applications and services while being one of the extremely essential elements in security rooms, surveillance facilities, education labs, art theatres, media production studios, editing labs, power stations, control rooms, football VAR room, crisis management rooms...etc.

Each console is a totally unique setup with every single detail is tailored specifically for each project needs and technical requirements.

Each console design is influenced by a wide range of factors formulate its specification, such area and layout of the room, number of equipment and screens used, screens sizes, number of operators and supervisors, angles of screen tilting, work surface position, light and air condition...etc.

All these factors are important design inputs to help formulate the perfect design for a given console to perfectly meet its purposes.





**Horizon for Industry** has a long and diversified history in design and production of a vast range of console types, features, facilities and appearances with different types such as:

**1. Desk console:**

Desk console and operation desk arrays contain lower cables path (duct) with power distribution unit (PDU) and protection circuit breakers. With the wooden worksurface desktop as specified by the client.

**2. Stacked screens chassis:**

Work surface may contain multiple screen holder(s) with movable arms.

**3. Wall console:**

Wall consoles include back path (ducts) for power cable and a separate path for signal cables to prevent the interference of the electromagnetic waves that affect the quality of signals.

**4. Video wall console:**

Screen mounting and dismantling is user friendly, from 1 to 3 screens are vertically stacked. First screen is 17° backward tilted with the second screen is vertically fixed and third (upper) screen is 17° forward tilted for best viewing angles.

**5. Operation desks :**

It may contain PC sliding housing and keyboard drawer with a wide range of modifications tailored to the nature of the project and to facilitate the operator's daily use.

**6. Equipment racking:**

In most cases the workstation is mounted over 9U rack or 19" mounting bars and internal horizontal and vertical cable ducts for cable management. Vertical ducts fixed behind each stacked screen line with 4 power sockets with a protection 10 Amp circuit breaker.



Check reference list at the end

*Tatter's*  
TM

BY *Horizon*  
FOR INDUSTRY

## Clients Reference List

## Government Sector



وزارة الاتصالات  
وتكنولوجيا المعلومات



## University Sector



## Petroleum Sector



**Enppi**



## Sports Sector



## Telecom Sector



## Banking Sector





# System Integrator Sector



# Other Sectors



# Server Racks & Cabinets

## 1) Government:

- Ministry of Defense "MOD".
- Egyptian Intelligence Authority.
- Ministry of Interior.
- Ministry of Trade and Industry.
- Ministry of Communications & Information Technology, MCIT.
- Ministry of Electricity and Power.
- Suez Canal Authority.
- People's Assembly of Egypt (Egyptian Parliament).
- Shurah Assembly.
- Egyptian Museum

## 2) Telecom Organizations:

- Vodafone
- Mobinil
- Etisalat
- Nokia
- Schneider Electric
- Alcatel-Lucent
- Nilesat
- Media Production City
- Delta Limited, Saudi Arabia, 3 different TV studios in Dammam and Mecca
- Rotana (Art studios in Four Seasons, Cairo)
- Egyptian Radio & TV Union, ERTU

## 3) Petroleum Sector

- Gasco
- Enppi
- Egyptian Maintenance Co. [EMC]
- San Misr
- Petroleum Pipes Company - Mostorod
- The Egyptian Mud Engineering & Chemicals Co. "EMEC".

## 4) Banking Sector:

- Central Bank of Egypt – Mohandeseen.
- Central Bank of Egypt – Kasr El-Nil
- HSBC Bank.
- Head Office for Barclays Bank - City Star

- National Bank of Egypt, NBE.
- Bank of Alexandria.
- Misr Bank.
- Commercial International Bank, CIB.
- United Bank.
- Audi Bank.
- BNP Paribas Bank.
- National Bank of Greece "NBG Bank"

## 5) Embassies:

- Sultanate Of Oman Embassy.

## 6) System Integrators:

- Cairo Communications Systems
- Audio Technology
- Egyptian company for Electrical Equipment (Panasonic)
- Siemens Technologies SAE.
- Nokia Siemens Networks.
- EGTI.
- Orascom Construction.
- Orascom Technology.
- Summit .
- Mobi Serve Holding.
- Telecom Services International "FZC".
- Raya Integration.
- Advanced Computer Technology "ACT".
- Alkan Telecom.
- Cairo Festival.
- G4S Security Services.
- Telecommunication Engineering Consultant Office "Teco".
- Catech .
- Radio Holland.
- Telecom & Technology Co. "TeleTech".
- System Engineering Of Egypt. "SEE".

## 7) Universities:

- American University in Cairo, AUC.
- German University in Cairo, GUC.
- Cairo University.
- MSA University
- Sinai University – Areesh.
- Modern Academy

# Server Racks & Cabinets

## 7) Sports:

- Alexandria Stadium .
- Port said Stadium.
- Aswan Stadium.

## 8) Others:

- SAMA Holding Group.
- Dubai Ports World – Sokhna “DP World Sokhna”

- Mercedes Commercial Vehicles MCV.
- Bibliotheca Alexandrina.
- Damietta Sea Port.
- Different 5-star hotels.
- Mountain View

# Surveillance Consoles

## 1) Banks (control rooms):

The Central Bank Of Egypt  
The Central Bank of Egypt – Mohandessin.  
The Central Bank of Egypt - Kasr El Nile.  
The Central Bank of Egypt – The Monetary Press.  
Bank Misr – Headquarters  
The United Bank - Ramsis branch  
The United Bank - Kasr El Ainy branch  
Banque du Caire

## 2) Government (Control rooms):

General Intelligence Authority  
National Security Authority  
Egyptian Armed Forces  
Ministry of Interior - General Traffic Administration - Nasr City  
Alexandria Governorate Headquarters  
Suez Canal Authority - Vessel Traffic Service Center (VTS) – Portsaid Governorate  
Suez Canal Authority - Vessel Traffic Service Center (VTS) – Suez Governorate  
Suez Canal Authority - Vessel Traffic Service Center (VTS) – Ismailia Governorate  
Suez Canal – Ismailia  
Al Azhar Tunnel  
Power Station - Talkha, Dakahleya Governorate  
Power Station – Abu El-Nomres

## 3) Culture and Sports (Control rooms):

Confederation Of African Football “CAF”  
Renaissance Sharm El-Sheikh Resort  
Museum of Culture (UNESCO)  
Islamic Museum  
Portsaid Stadium  
Alexandria Stadium  
Aswan Stadium  
Wadi Al Nile Hospital  
NileSat  
P&G company - All branches  
Al Ain Al Sokhna Port (DP World)  
Sultanate of Oman Embassy  
Four Seasons Hotel - Garden City  
Mehwar channels  
Carrefour – Maadi  
Living In buildings - 5th Compound, New Cairo  
H&M - City Stars  
Egyptian National Library and Archives

## 4) Petroleum sector (Control rooms):

Enppi - (Assiut Oil Refining Company)  
Gasco  
Petrobel  
Alexandria Mineral Oils Company (AMOC)

## 5) Universities (Control rooms):

Modern Technology University (MTU)





+2 2414 4910  
+2 2291 1672



+2 0100 8959 977



[www.horizonforindustry.com](http://www.horizonforindustry.com)



[horizon@horizonforindustry.com](mailto:horizon@horizonforindustry.com)



80 Rabaa Investment Buildings,  
Nozha St. Ard El-Golf, Cairo - Egypt



72 El-Mahager Industrial  
Zone B and C, Obour City