

# *Horizon*

---

FOR INDUSTRY



*Totter's*  
TM  
DATA NETWORK RACKS & CONSOLES

# CERTIFICATE OF REGISTRATION

**intertek**  
Total Quality. Assured.

This is to certify that the management system of:

## Horizon for Industry

Main Site: Administration Office : 80 Rabaa Investment  
Buildings, Nozha St., Ard El-Golf, Cairo, Egypt

Additional Site: Horizon for Industry., Factory: 72 El-Mahager Zone  
B&C Industrial Zone, Obour City

has been registered by Intertek as conforming to the requirements  
of:

## ISO 9001:2015

The management system is applicable to:

Manufacturing & Assembling Data Network Racks & Consoles  
according to market requirements

**Certificate Number:**  
0100589

**Initial Certification Date:**  
12 February 2014

**Last Certificate Expiry Date:**  
11 February 2023

**Date of Last Recertification Audit:**  
06 February 2023

**Certification Cycle Start Date:**  
03 March 2023

**Issuing Date:**  
03 February 2023

**Valid Until:**  
11 February 2026



**intertek**



014

**Calin Moldovean**  
President, Business Assurance

Intertek Certification Limited, 10A Victory Park,  
Victory Road, Derby DE24 8ZF, United Kingdom  
Intertek Certification Limited is a UKAS accredited  
body under schedule of  
accreditation no. 014.



In the issuance of this certificate, Intertek assumes no liability to any party other than to the Client, and then only in accordance with the agreed upon Certification Agreement. This certificate's validity is subject to the organisation maintaining their system in accordance with Intertek's requirements for systems certification. Validity may be confirmed via email at [certificate.validation@intertek.com](mailto:certificate.validation@intertek.com) or by scanning the code to the right with a smartphone. The certificate remains the property of Intertek, to whom it must be returned upon request.



Approved By

**ECG**   
ENGINEERING CONSULTANTS GROUP S.A.



# TABLE OF CONTENTS

## 1-8

### INDOOR RACK

- 2 Slim Rack
- 3-4 Wall mount
- 5-6 Freestanding 600mm
- 7-8 Freestanding 800mm

## 9-17

### OUTDOOR RACK

- 10 Slim rack
- 11-12 IP55 Racks
- 13-14 MSAN
- 15-16 Twin rack
- 17 Protection measures

## 18-22

### ADD-ONS & ACCESSORIES

- 19 ODF
- 19 Cable organizers
- 20 Shelves
- 21 Fan units
- 22 Power distribution unit

## 23-24

### CONSOLES

- 24 Technical specifications
- 24 Description
- 24 Workstation

## 25-28

### CLIENT LIST

- 26 Government sector
- 26 Universities sector
- 26 Petroleum sector
- 27 Sports sector
- 27 Telecom sector
- 27 Banking sector
- 28 System Integrators
- 28 Other sectors

# INDOOR RACKS

Indoor Link







# SLIM RACKS

## Technical Specifications

1. Standard dimensions:  
525x500x150mm  
500x450x120mm
2. Vertical network equipment orientation  
for space saving
3. Standard 19" mounting bars



## Options

1. Rear galvanized mounting plate for non  
19" equipment
2. Supplied with or without fan units
3. Wall mounted or embedded (flush mount)
4. Fan powered ventilation

  
1.25mm  
Steel

  
2-fan

  
Flush  
mount

  
Galvanization

  
Electrostatic  
Painting



600x400  
Ref.# NPR7 / 6040

## Technical Specifications

1. 1.25mm steel
2. Lock and Key
3. Removable sides for accessibility
4. 1 to 2 fan units for ventilation

## Options

1. Front door: Perforated Single Front Door with locks & Keys.
2. Front door:
  - 2.1. Designed for best ventilation of the rack.
  - 2.2. Vented with punches to achieve 80% ventilation.
  - 2.3. Front door on 2-point hinges.



600\*600  
Ref.# NPR9 / 6060

  
1.25mm  
Steel

  
1-2 fan

  
Wall  
Mount

  
Galvanization

  
Electrostatic  
Painting



600x800  
Ref.# NPR12 / 6080

12U



600x1000  
Ref.#NPR15 / 60100

15U

	600x400	600x600	600x800	600x1000	Ref.#	Serial #
7U	•				NPR07	6040
9U		•	•	•	NPR09	6060/ 6080/ 60100
12U		•	•		NPR12	6060/ 6080
15U		•		•	NPR15	6060/ 60100

600MM WIDTH



600x1000  
Ref.# NPR9 / 60100

## Technical Specifications

1. Locks and Keys
2. Removable back and sides for accessibility
3. Security glass door and solid back door

## Options

1. Front door: Perforated Single Front Door with lock & Keys.
2. Back door: Perforated Single Back Door with lock & Keys.
3. Front & Back doors:
  - 3.1. Designed for best ventilation of the rack.
  - 3.2. Vented with punches to achieve 80% ventilation.
  - 3.3. Both doors are on 2-point hinges.



600x1000  
Ref.# NPR15 / 60100

  
1-1.5mm  
Steel

  
2-4 fans

  
Wheels or  
adjustable feet

  
Galvanization

  
Electrostatic  
Painting



600x1000  
Ref.# NPR22 / 60100



600x1000  
Ref.# NPR27 / 60100

	600x600	600x800	600x1000	Ref.#	Serial#
18U		•		NPR18	6080
27U	•	•	•	NPR27	6060/ 6080/ 60100
32U		•		NPR32	6080
37U	•			NPR37	6060
42U		•	•	NPR42	6080/ 60100
44U	•			NPR44	6060





800x1000  
Ref.# NPR37 / 80100

# 37U

## Technical Specifications

1. Locks and Keys
2. Removable back and sides for accessibility
3. Security glass door and solid back door

## Options

1. Front door: Perforated Single Front Door with lock & Keys.
2. Back door: Perforated Single Back Door with lock & Keys.
3. Front & Back doors:
  - 3.1. Designed for best ventilation of the rack.
  - 3.2. Vented with punches to achieve 80% ventilation.
  - 3.3. Both doors are on 2-point hinges.



1-1.5mm  
Steel



2-4 fans



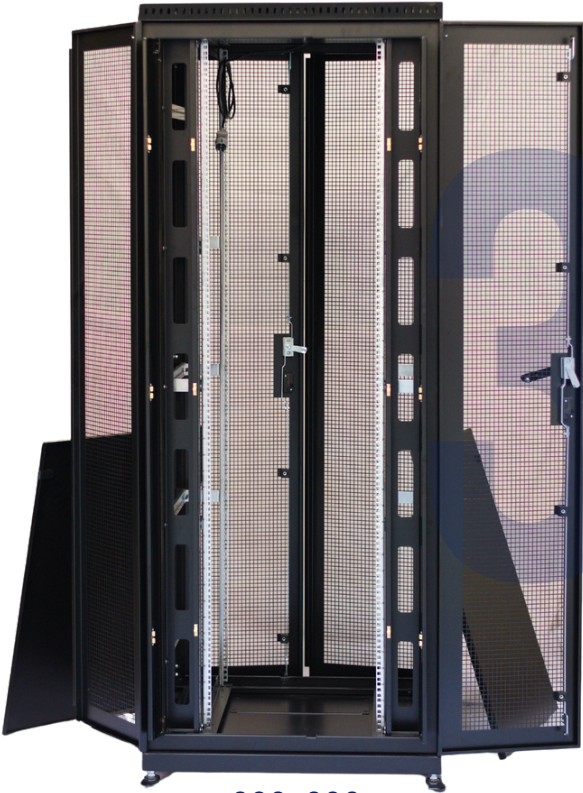
Wheels or  
adjustable feet



Galvanization



Electrostatic  
Painting



800x800  
Ref.# NPR32 / 8080



800x1200  
Ref.# NPR42 / 80120

	800x800	800x1000	800x1100	800x1200	Ref.#	Serial#
27U	•				NPR27	8008
32U	•				NPR32	8080
37U		•			NPR37	80100
42U	•	•		•	NPR42	8080/ 80100/ 80120
47U			•	•	NPR47	80110 / 801200

# OUTDOOR RACKS

Outdoor Link





# SLIM RACKS

## Technical Specifications

1. Dust filters on all slots and rubber gaskets on door are added
2. Dimensions: H620 x W530 x D200mm (Customizable)
3. Ventilation: One side suction fan with filter & cover
4. Cable entry: through special cable glands with inner rubber gaskets to protect against dust or insect entry
5. Access Control: Lock with keys at front.



## Option

1. Fans are controlled: by a pre-set thermostat to control the temperature degree at which fans operate and stop. This is essential to control enclosure temperature and for better fan's durability.



1.2mm  
Steel



1-2 Suction fans  
1-2 Exhaust fans



Wall/ Pole  
Mount



Galvanization



Electrostatic  
Painting



600x600  
Ref.# OPR9 / 6060

9U

## Technical Specifications

1. Dust filters on all slots
2. Rubber sealing gaskets on doors
3. Ventilation: Two opposite fan units for suction and exhaustion to create a positive air circulation
4. Temperature control: Fans are electronically controlled by a pre-set thermostat
5. Cable entry: through special cable glands with inner rubber gasket to protect against dust or insect entry.
6. Tilted roof: to protect against rain accumulation.
7. Access Control: 3-Point lock with keys at the front.



1.2mm  
Steel



1-2 Suction fans  
1-2 Exhaust fans



Wall/ Pole Mount  
Free Standing



Galvanization



Electrostatic  
Painting





600x600  
Ref.# OPR12 / 6060

12U

24U



600x600  
Ref.# OPR24 / 6060

	600x400	600x430	600x600	Ref.#	Serial #
6U		•		OPR06	6043
7U			•	OPR07	6060
9U	•		•	OPR09	6040/ 6060
12U			•	OPR12	6060
15U			•	OPR15	6060
24U			•	OPR24	6060



## Technical Specifications

1. Dimensions: W1900 x H2000 x D880mm
2. Outdoor isolating and protecting standards (dust and rain proof)
3. 19" & 21" Mounting columns made from 1.5mm stainless steel sheets.
4. Earth bars 25cm made from red electrical copper (99.9% purity)
5. Rubber steel-reinforced gaskets to tighten all doors' openings.
6. Insulation material PEF in between the double layers for heat insulation.
7. Isolated batteries compartments.
8. Back panel ventilation slots for releasing harmful gas generated by batteries.



1.2mm  
Steel



AC or Heat  
exchanger



Free standing on  
concrete base



Galvanization



Electrostatic  
Painting



- 9. Earth bars: Fixed in the bottom layer of the compartments.
- 10. Separate cable entrance openings for power, data and optical cables.
- 11. Ventilation by outdoor air conditioners or heat exchangers.
- 12. Enclosure is assembly installation design.
- 13. Insulation material Polyethylene foam.
- 14. Enclosure has 4 brackets to be fixed on concrete base.

## Doors & Partitions Specifications

---

- 1. Enclosure includes two front doors for the two separated compartments with 110° opening angle controlled by door limiting devices.
- 2. One side door for the side MDF compartment.
- 3. One side window at the other side for consumption meter inspection.
- 4. The lock is theft proof three-point lock with door sensors.
- 5. Every component's section is completely isolated (equipment, battery & power supply) for safety and better heat isolation and temperature control.
- 6. Special windows in the intermediate walls for cables traffic.



# TWIN RACK

## Technical Specifications

1. 19" Outdoor 28U Twin Rack Double Wall
2. Dimensions: 28U x W1000mm x D600 mm
3. Material: Doors & sides thickness is 2mm, Inner lining for doors & Sides are 1mm.
4. Free Standing standard on chassis.
5. Outdoor isolating protection standards (dust and rain proof)
6. Roof tilted: to protect against rain accumulation above the roof.
7. Front & Back Doors: Twin double doors with 3-point fixation.



1.2mm  
Steel



AC or Heat  
exchanger



Free standing on  
concrete base



Galvanization



Electrostatic  
Painting



- 8. Double layer wall: Can be equipped with inner rock wool or high-density 37 polyethylene foam lining upon request for extra temperature insulation.
- 9. Movable 19" Mounting Columns: Columns can be shifted forward & backward at 20mm steps to best-fit depths of all types of equipment.
- 10. Cable entry: Cable handling compartment with 20cm Height beneath the whole rack area. It has front & rear doors 13cm height under the rack base.
- 11. Cable Organizers: At sides of the 19" columns.
- 12. Optic Fiber Organizers: At front side of the 19" columns.
- 13. Access Control: Lock with keys on front & back, all locks are with window blots.
- 14. Prior galvanization is must to resist the weather conditions.
- 15. Painting: Electrostatic oven painting for outdoor applications.  
Ral.7035 (light textured grey)
- 16. Galvanization: 19" mounting columns for scratch protection.



### **TEMPERATURE CONTROL**

1. Two opposing suction and exhaust fan units.
2. Outdoor grade filters and covers.
3. Fans are controlled by adjustable thermostat.



### **RUBBER SEALANT**

1. Two Rubber sealing frame
2. All around the door frame



### **CEILING FANS**

1. Rubber sealing all around the ceiling frame
2. Inverted Ceiling design
3. Electronic thermostat control



### **VERTICAL LOCKING MECHANISM**

1. Espagnolette top and bottom locking system.
2. Two locking points to ensure sealing rubber compression.



### **HANGING BRACKETS**

1. Two galvanised pole mounting brackets.



# ADD-ONS & ACCESSORIES

Accessories Link



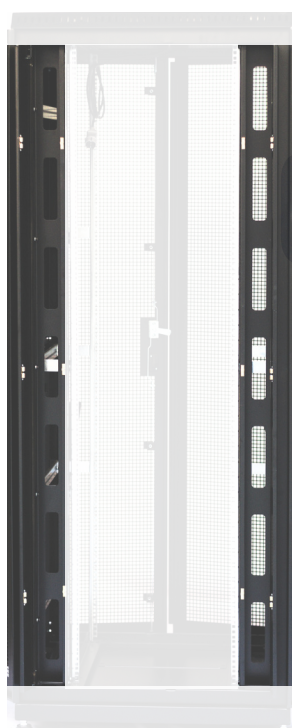


# ODF

## OPTICAL DISTRIBUTION FRAME

### Technical Specifications

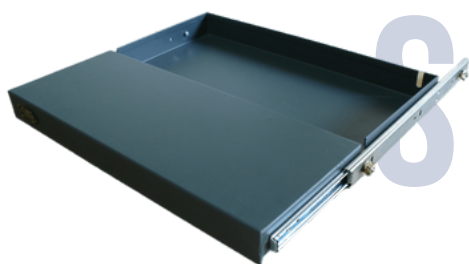
1. High density and high-capacity frame dedicated to provide cable interconnections.
2. Covers fiber splicing, termination and connectors all together in one frame.
3. 4U/ 5U height. (Customisable)
4. ODF 144 connectors includes vertical multiple shelves to carry the splicing unit and connectors.
5. Cable organizer rings are vertically and horizontally fixed in front and rear areas of ODF for accessibility.
6. ODF front cover keeps the network components safe from misuse.
7. ODF is manufactured from steel sheets 1-1.5mm thick, and electrostatic painted.
8. ODF front cover keeps the network components safe from misuse.
9. ODF is manufactured from steel sheets 1-1.5mm thick, and electrostatic painted.



# CABLE ORGANIZER

### Technical Specifications

1. Vertical built-in cable organizer along the whole rack
2. With clip on door mechanism for elegant and organised setup.



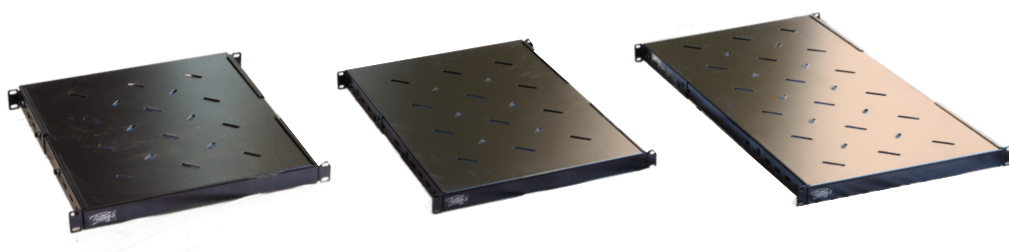
Sliding keyboard shelf  
D 400 x 1U height

# SHELVES

## Technical Specifications

---

1. Keyboard Shelf for 19" racks
2. Dimensions:
  - 2.1. (PKB 19-6) for 600 x 600mm Racks.
  - 2.2. (PKB 19-8) for 600/800 x 800mm Racks.
  - 2.3. (PKB 19-10) for 800 x 1000mm Racks.
3. Load capacity is up to 30 Kg.



Server Shelf (PSS85)  
D 850x H77mm

## Technical Specifications

---

1. 19" Fixed server shelf with mounting kit. Best fit for loads up to 100 Kgs.
2. Dimensions:
  - 2.1. 500mm depth x 1U height for Racks D600mm (PFS-50)
  - 2.2. 650mm depth x 1U height for Racks D800mm (PFS-65)
  - 2.3. 850mm depth x 1U height for Racks D1000mm (PFS-85)



FAN

Four-fans that includes on/off front indicator switch

## Technical Specifications

1. Height 1U
2. On/Off switch
3. Thermal sensors
4. Sensor to monitor the temperature of the rack and activates 1, 2, 3 or 4 fans according to the temperature recorded, an alarm (buzzer). When the temperature is safe again, it shuts off the fans.
5. Outdoor option, fitted with outdoor filters and wind blocker.



2 Fans with on/off switch  
19" x 220mm depth x 1U



4 Fans with on/off switch  
19" x 410mm depth x 1U





20 socket PDU + circuit breaker

# PDU

## POWER DISTRIBUTION UNIT

## Technical Specifications

1. Stand alone or 19" Rack mounted
2. Bticino / Lucci Modo sockets
3. Electrostatic paint for indoor application
4. High voltage sockets, switches and wire.
5. Sockets with 10 amp. impedance and a max. of 16 amp.
6. Sockets with accidental opening protection.



8 socket PDU

4 socket PDU  
+ Power switch6 socket PDU  
+ Power switch

## Options

1. 4/ 6/ 8/ 20 sockets
2. On/Off switch
3. Circuit breakers
4. C13 sockets

20 C13 socket PDU  
+circuit breaker

# SURVEILLANCE CONSOLE

Consoles Link



## Technical Specifications

1. Steel or wooden frames for (LCD or LED) screens, sizes 17" up to 50" on arrays.
2. From 1 to 3 screens are vertically stacked. First screen is 17° backward tilted. Second screen is vertically fixed and third (upper) screen is 17° forward tilted for best viewing angles.
3. Lower section 19" module for equipment racking.
4. Internal horizontal and vertical cable ducts for cable management.
5. Vertical ducts fixed behind each stacked screen line with 4 power sockets with a protection 10Amp circuit breaker.



## Description

Console is a central station where user can receive many video signals from remote locations directly to main control room.

Consoles configurations are customized per project and includes:

1. Security surveillance
2. Monitoring and managing operations
3. Audio/video production and editing
4. Satellite monitoring stations
5. Stadium display system



## Workstation

1. Work surface fixed at 72 cm height from ground for operators.
2. Tilted footrest for operator best convenience.
3. Open chassis consoles for big screens, 37-60" are supplied with special feet for stability.
4. Height may exceed 3 meters as per project.

# CLIENTS REFERENCE LIST

Reference list  
link



# Government Sector



وزارة الاتصالات  
وتكنولوجيا المعلومات



# University Sector



# Petroleum Sector



شركة أنابيب البترول  
Petroleum Pipelines Co.



الشركة المصرية للغازات الطبيعية



# Sports Sector



# Telecom Sector



# Banking Sector





# System Integrator Sector



# Other Sectors



# *Horizon*

---

FOR INDUSTRY



+2 2414 4910  
+2 2291 1672



+2 0100 8959 977



[www.horizonforindustry.com](http://www.horizonforindustry.com)



[horizon@horizonforindustry.com](mailto:horizon@horizonforindustry.com)



80 Rabaa Investment Buildings,  
Nozha St. Ard El-Golf, Cairo - Egypt



72 El-Mahager Industrial Zone B and C, Obour City